

Change detection in spatio-temporal point clouds



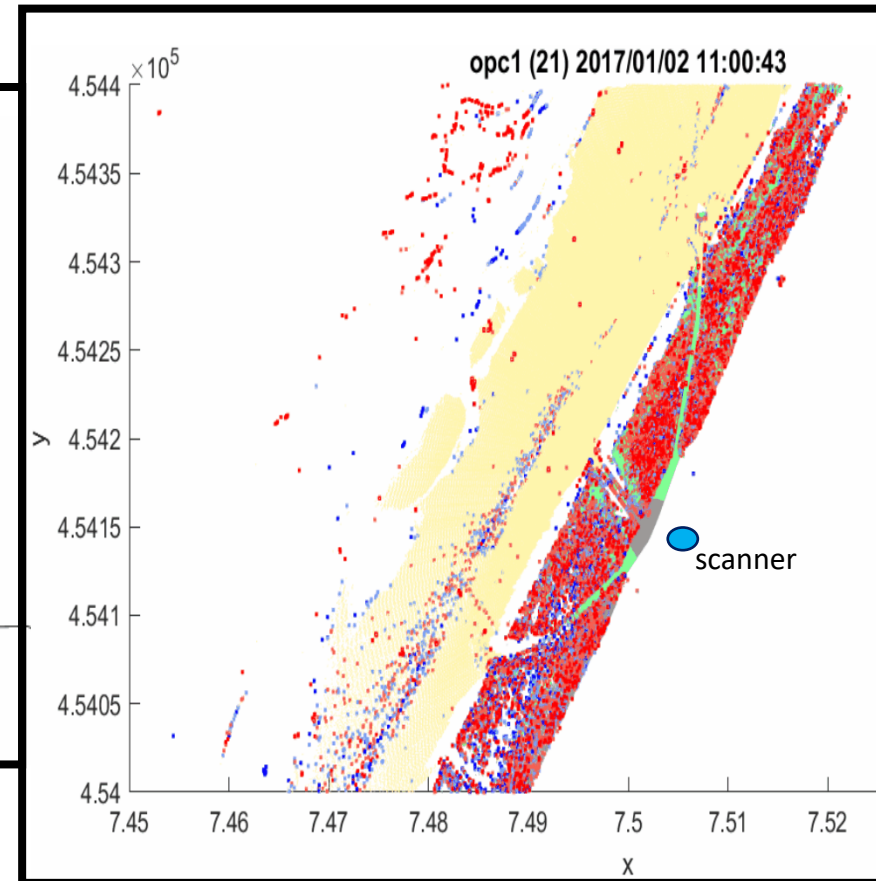
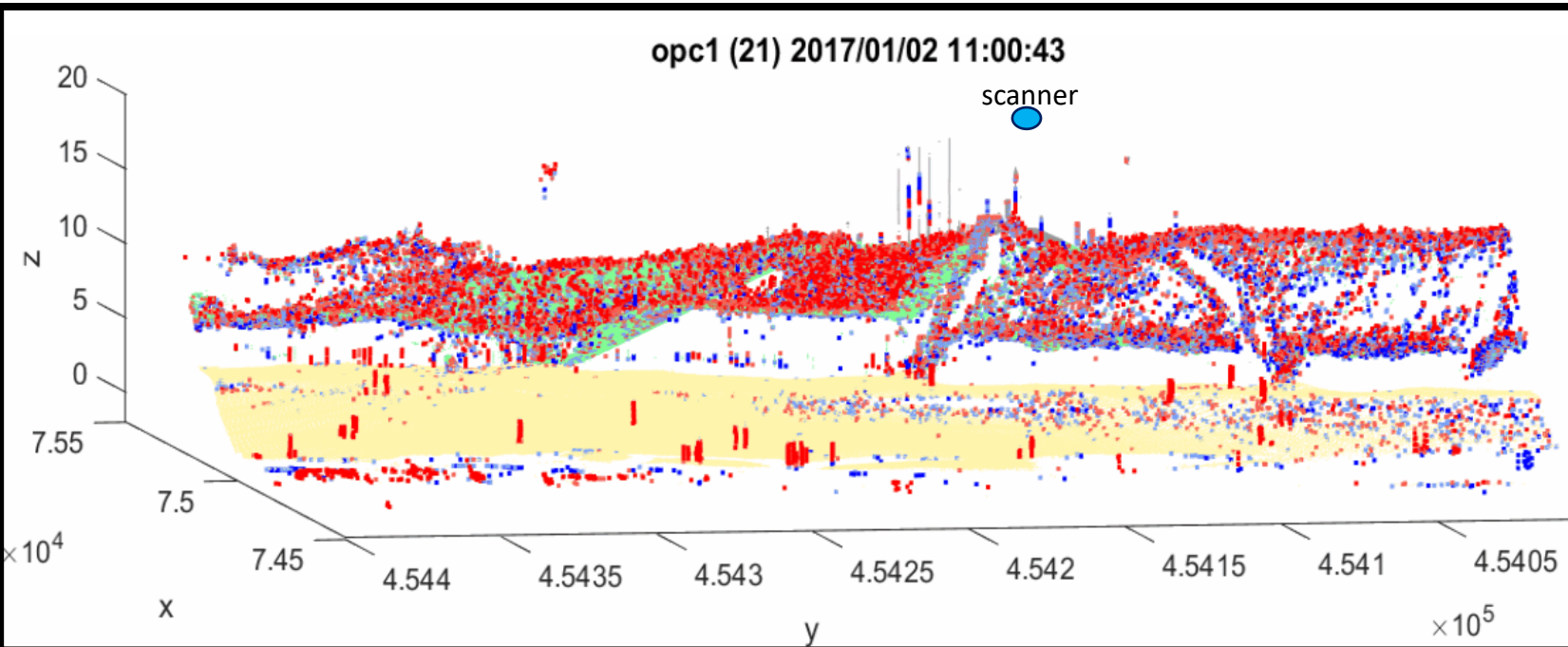
Vitali Diaz¹, Peter van Oosterom¹, Martijn Meijers¹, Edward Verbree¹, Nauman Ahmed², Thijs van Lankveld²

¹ Faculty of Architecture and the Built Environment, Delft University of Technology, Delft, the Netherlands

² Netherlands eScience Center, Amsterdam, the Netherlands

Implementing, testing, and analyzing 8 different methods for the computation

Why point clouds for change detection (not raster/tin)?



● dz > 0
● dz < 0

